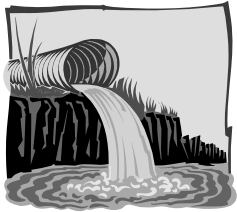


---

## Storm Water Pollution Prevention



Pollutants discharged to washes significantly contribute to water pollution. How do pollutants get into our washes? Most come from streets, parking lots, and paved areas during rain storms. Others are spilled, deliberately drained, or dumped into streets, gutters, or storm drain inlets.

Storm water run-off from businesses is one of the major contributors to urban run-off pollution. Automotive fluids, paints, solvents, grease, pesticides, herbicides, litter, cement, and yard wastes are some of the pollutants that get into storm drains. All businesses can reduce or eliminate their contribution to storm water pollution by making changes to routine operations or maintenance practices. This brochure suggests ten ways that you can eliminate or reduce storm water pollution at your work place.

---

## Ten Steps You Can Take

### **1** *Cover areas where potential pollutants are stored.*

Pollutants such as trash, grease, paints, detergents, and metals can come into contact with storm water or water from other sources and create polluted run-off. Keep these materials covered, labeled, and stored in appropriate containers.

### **2** *Prevent spills and leaks.*

Maintain a regular inspection and repair schedule for vehicles and equipment. Take appropriate precautions in loading and unloading materials. Look for and correct any potential leaks or spills.

### **3** *Develop plans to manage spills should they occur.*

Clean any spills promptly without water whenever possible. Rags, damp mops, and dry absorbent materials are recommended for clean up. Dispose of any spill waste promptly and properly.

---

### **4** *Sweep parking lots and outdoor storage areas regularly.*

Sweep these areas to maintain a debris-free facility. Dispose of debris, do not sweep it into the gutter. Never hose off paved surfaces.

### **5** *Maintain landscaped areas.*

Pick up and properly dispose of waste. Avoid over-irrigation and over-application of herbicides and pesticides that could create run-off to storm drains or washes. Consider planting native drought-tolerant vegetation that thrives with little watering and minimal herbicide or pesticide treatments.

### **6** *Recycle or dispose of fluids properly.*

Many automotive fluids can be recycled, others must be disposed of as hazardous materials.

---

---

## More Pollution Prevention Techniques...

### **7** *Check for and correct illicit connections to storm drains.*

All wastewater must be discharged to a sanitary sewer, a septic tank, or on-site treatment system. It should not be carried by storm drains to waterways.

### **8** *Wash vehicles and equipment in designated areas only.*

Wash areas should be paved and fitted to drain only to the sanitary sewer, septic tank, or on-site treatment. A commercial car wash may be an alternative if your facility is not properly equipped.

### **9** *Educate customers and train employees to implement storm water management practices.*

Post notices of appropriate practices, provide convenient disposal containers and train employees to implement these management practices.

---

## **10** *Prepare and implement a Storm Water Pollution Prevention Plan.*

State regulations require some businesses to comply with specific storm water regulations. If these regulations apply to your business, take the proper steps to stay in compliance. If you need additional information, contact Arizona DEQ or Pima County DEQ at the phone numbers listed in this brochure.



### **For More Information About Storm Water Pollution Prevention**

Arizona Department of Environmental Quality:

<http://www.azdeq.gov/environ/water/permits/stormwater.html>

Pima County Department of Environmental Quality:

520-243-7400

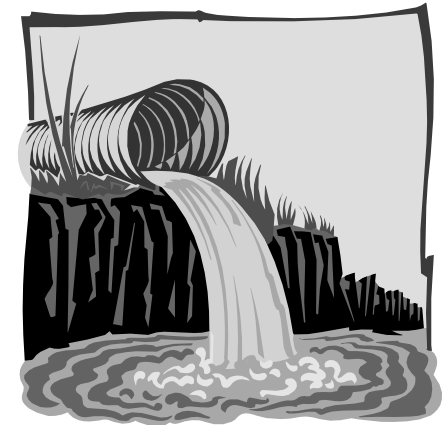
<http://www.deq.pima.gov/water/stwmgmprog.html>

City of Tucson/Department of Transportation:

<http://dot.ci.tucson.az.us/stormwater/>

---

# Storm Water Pollution Prevention is Everybody's Business



**Pima County  
Department of Environmental Quality  
33 North Stone Avenue, Suite 700  
Tucson, Arizona 85701  
520-243-7400  
[www.deq.pima.gov](http://www.deq.pima.gov)**